

RESEARCH

Open Access

Transition to annual life history coincides with reduction in cell cycle speed during early cleavage in three independent clades of annual killifish

Luca Dolfi¹, Roberto Ripa¹ and Alessandro Cellerino^{1,2*}

Abstract

Background: Annual killifishes inhabit temporary ponds and their embryos survive the dry season encased in the mud by entering diapause, a process that arrests embryonic development during hostile conditions. Annual killifishes are present within three clades distributed in Africa (one East and one West of the Dahomey gap) and South America. Within each of these phylogenetic clades, a non-annual clade is sister *taxon* to an annual clade and therefore represent an example of convergent evolution.

Early cleavage of teleost embryos is characterized by a very fast cell cycle (15-30 minutes) and lack of G₁ and G₂ phases. Here, we decided to investigate rates of early cleavage in annual killifishes. In addition, we specifically tested whether also annual killifish embryos lack G₁ and G₂ phases.

Results: We used time lapse brightfield microscopy to investigate cell division kinetics during the first developmental stages of annual- and non-annual species belonging to the three different phylogenetic clades. Annual killifishes of all three clades showed cleavage times significantly longer when compared to their non-annual sister taxa (average 35 min vs. average 75 min). Using FUCCI fluorescent imaging of the cell cycle after microinjection in the annual species *Nothobranchius furzeri*, we demonstrate that the first 5 divisions are synchronous and do not show a G₁ phase. Cell cycle synchronization is lost after the 5th cleavage division.

Conclusions: Our results show, for the first time, that cell cycle rate during cleavage, a trait thought to be rather evolutionary conserved can undergo convergent evolutionary change in response to variations in life-history.

Keywords: *Nothobranchius*, Early development, Segmentation, Life history evolution, Midblastula transition, Imaging, Diapause

Background

Life history trade-offs are major forces that shape the evolution of embryonic development. Extreme examples are seasonal species where embryos undergo *diapause*, a suspension of development to overcome hostile periods. A seasonal life cycle has evolved also in a clade of teleost fishes (suborder Aplocheiloidei) known as *annual* killifish [1]. Annual killifish inhabit ephemeral bodies of water that fill during the monsoon season and disappear by evaporation after its end. Annual killifish are present in Africa and South America and are adapted to alternating wet and dry seasons. All adult fish die when their habitat

dries out and survival of the population is ensured by desiccation-resistant eggs that enter into diapause and remain encased in the dry mud until the next rainy season [2-5]. Annual killifish, especially those of the genus *Nothobranchius*, are becoming popular model organisms for studying aging and life-history evolution [3,6-16]. Diapause in annual killifish is associated with major metabolic remodeling, where several pathways involved in energy production are modulated in order to minimize the embryo's aerobic metabolism and production of reactive oxygen species allowing quiescence. During diapause, oxygen consumption is suppressed and the cell cycle arrested [4,17]. In some habitats of annual killifish the duration of the temporary pools is only a few months [15], and therefore the animals spend the majority of their life in diapause.

* Correspondence: alessandro.cellerino@sns.it

¹Scuola Normale Superiore, Pisa, Italy

²Fritz Lipmann Institute for Age Research, Leibniz Institute, Leibniz, Germany

The morphogenetic processes of early embryonic development of annual killifish show a remarkable derived character: during epiboly, blastomeres migrate as dispersed cells and remain on the yolk surface for days before they finally re-aggregate to form the embryonic axis [2]. This unique stage of development is often associated with the ability to enter into stasis at diapause I, although this trait varies among species of annual killifish.

During this dispersed state, the blastomeres migrate randomly for days before starting the reaggregation process [18] (see Additional file 1). After formation of the embryonic axis, the development is arrested at a specific stage of somitogenesis in diapause II [2] where the embryo can remain for several months (or even years).

Annual killifish are divided into three clades distributed in Africa (one west and one east of the Dahomey gap) and in South America (Figure 1) according to the only comprehensive molecular phylogeny for this taxon based on mitochondrial *loci*. In each of these regions, one clade is found that contains both annual and non-annual *genera* that are sister *taxa* [19,20]. The outgroup of all annual killifish is the non-annual genus *Aplocheilus*. Murphy and Collier [19] interpret his distribution of annual and non-annual clades with a model whereby the most common ancestor of all annual killifish was annual, and non-annual clades arose due to three independent losses of the ancestral annual trait [19,20]. Annual killifish offer a unique paradigm for investigations of the phenotypic evolution correlated with transitions in life history. As the three annual clades evolved independently, any trait that is common to these clades is likely

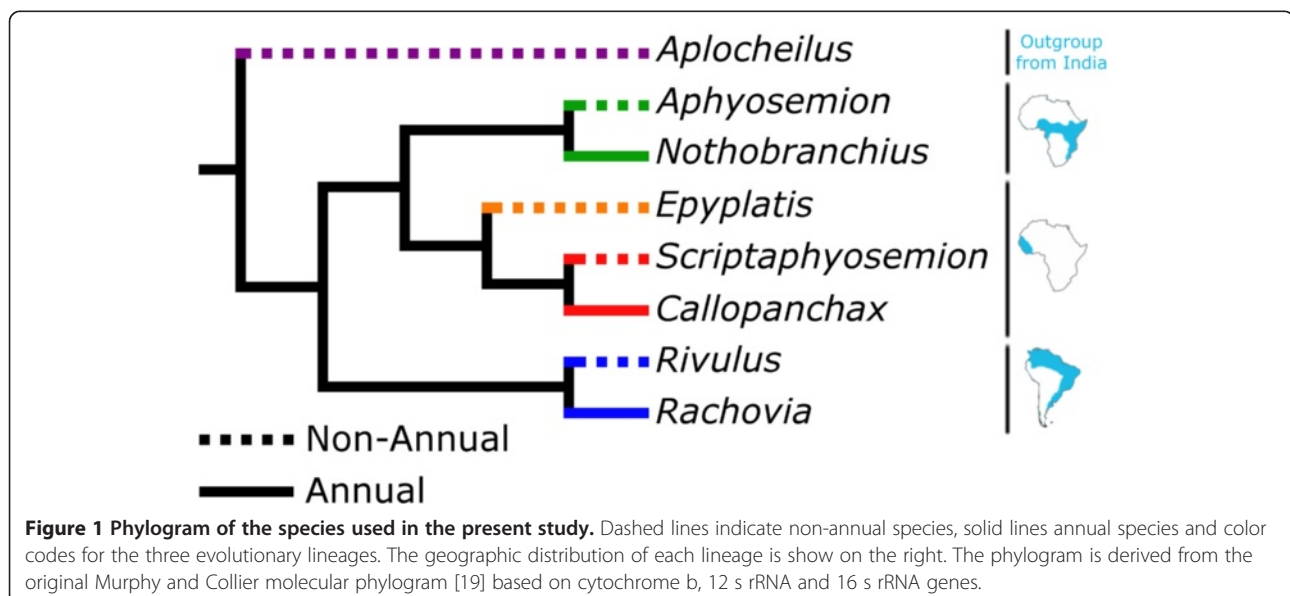
to be the result of evolutionary convergence in response to transition to annual life history.

Here we investigated the early development (up to the sixth division, cleavage) of annual and non-annual killifish embryos. In the species most closely related to those we study here, *Fundulus heteroclitus* [21], it is well described that during the cleavage phase cell divisions are synchronized so that 2, 4, 8, 16 and 32 cells arise in succession. This pattern is broadly conserved in teleost species, and cell cycle during cleavage is extremely fast (in the order of 15 to 30 minutes) in typical model teleosts such as *Danio rerio* [22], *Oryzias latipes* [23], *Gasterosteus aculeatus* [24] and also *Xenopus laevis* [25]. During cleavage there is no transcription of the embryonic genome but only translation of maternal transcripts and the cell cycle lacks the G₁ and G₂ phases, thus proceeding directly from S- to M-phase [26,27]. Here, we investigated the rate of early cleavages in annual killifishes embryos to assess whether cell-cycle length evolved differently in annual and non-annual clades.

Methods

Fish maintenance

All the fish used were raised in 35-L tanks at 23 to 25°C. They were fed two to three times a day with frozen Chironomus larvae or living nauplii of *Artemia salina*, depending on size. Annual killifish were bred in a small 3-L tank with 2 cm of river sand on the bottom for 1 hour. Eggs were collected by sieving the sand with a plastic net. Non-annual killifish were bred by floating an artificial floating bush made of acrylic wool strings (spawning mop) in the tank for 1 hour. Eggs were collected from the mop by hand.



Bright-field imaging

After collection, embryos were sorted and dead eggs and those past the two-cell stage were removed. Chorion projections were removed from three to six of the remaining embryos with forceps (when possible) and embedded in 1.5% SeaPlaque low gelling temperature agarose in a Petri dish. While the agar was still molten, eggs were put on the bottom of the dish and oriented, so that the developing blastodisc (animal pole) was parallel to the dish floor. Time lapse images were captured using a Leica M80 stereomicroscope placed in a temperature-controlled room held at 26°C. Magnification ranged between 25 and 45 times, depending on species. Photos were acquired every two to five minutes, depending on species, with a Nikon Digital Sight DS-Fi1 camera using Nikon Elements F 3.0 software or with a Zeiss AxioCam ERc5s camera using

ZEN software. Photos from a single acquisition session were opened with Fiji ImageJ as an image sequence, synchrony between eggs of the same experiment was evaluated and timings at which the different cell divisions occurred were noted.

FUCCI imaging

FUCCI reporter constructs used were previously optimized in for zebrafish [27]. Geminin-azami green and cdt1-kusabira orange were extracted from plasmids pT2KXIG using BamHI and ClaI and sub-cloned in a PcS2 expression vector under the control of an SP6 promoter. Synthetic RNAs were transcribed using mMES-SAGE mMACHINE® SP6 Transcription Kit, Ambion: 1 nl of both RNAs (final concentration 400 pg/nl each) was injected intracellularly in one-cell-stage embryos

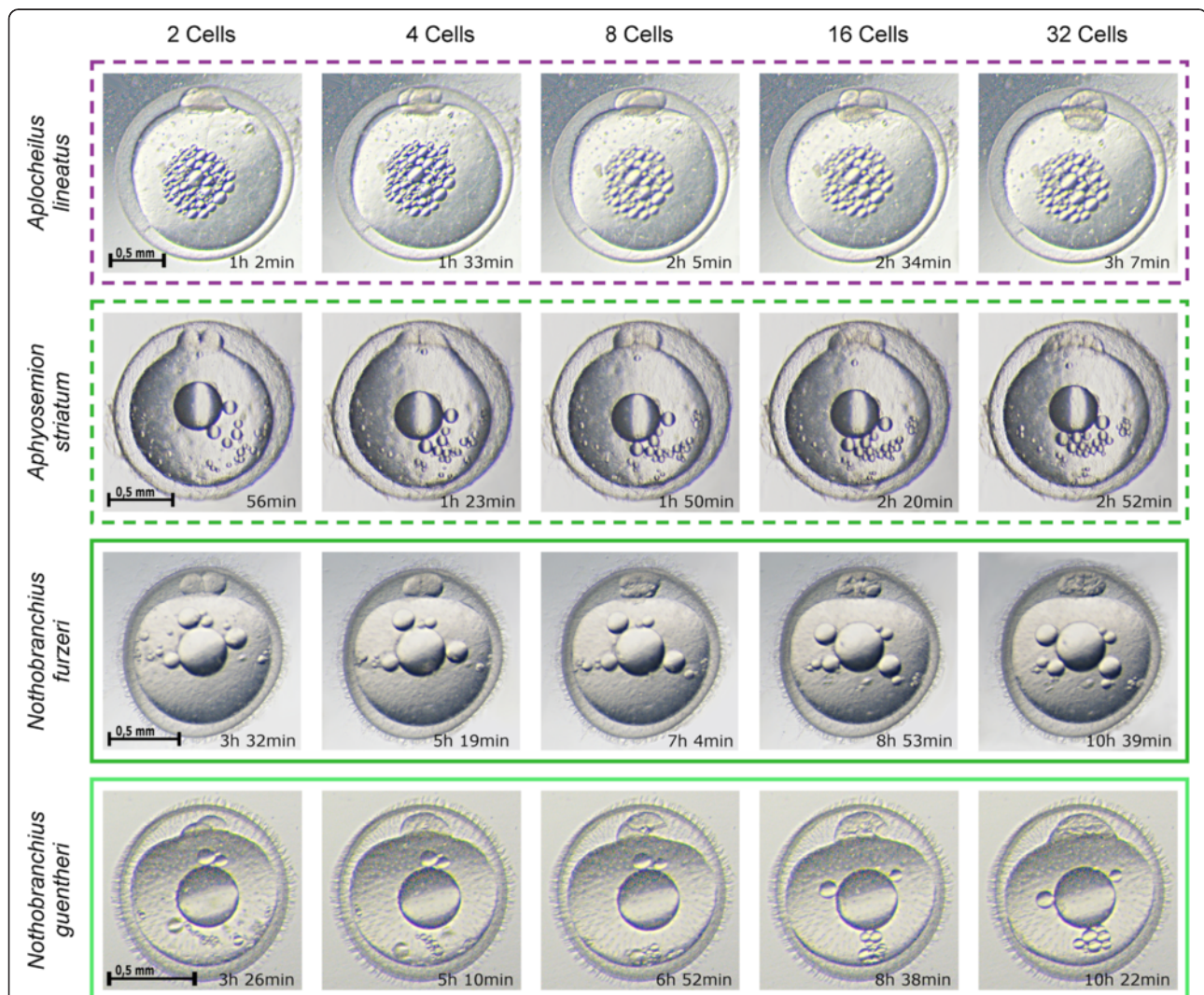


Figure 2 Early cleavage time-lapse. Non-annual species (dashed boxes) are compared with annual species (solid boxes) by brightfield time lapse imaging. Early cleavage stages are shown for each species and the average time at which they occur is indicated. There is a large difference in early cell division rates between annual and non-annual species.

using a Tritech microINJECTOR™. Injected embryos were then embedded in 2% low melting agar in a wilkon dish, oriented and left for 1 hour at 25°C while the agar was hardening.

Fluorescence images were acquired using a Leica TCS SP2 confocal microscope; 250 to 350 μm were scanned and an image was taken every 6 μm (40 to 60 images per embryo in total) for each time point. Acquisitions were performed every 13 minutes for almost 24 hours at room temperature (RT, using 488 and 543 emission lasers). Single images were reconstructed from stacks using Fiji imageJ. All images were edited with GIMP. Colors, contrast, brightness and sharpness were adjusted in order to optimize the contrast of the images. All videos were edited with Sony Vegas™. A sequence of images from a single embryo was chosen, oriented, cropped and saved as a new image sequence. This sequence of images was imported as a continuous video in Sony Vegas™.

Results and discussion

We used time-lapse microscopy to follow the early cleavage phase of the annual species *Nothobranchius furzeri* and *N. guentheri*, their closest non-annual relative *Aphyosemion striatum*, and the closest outgroup taxon to all annual killifish *Aplocheilus lineatus* (Figure 2 and

Additional file 2). The length of the cell cycle varied dramatically between these species. The average doubling time was 106,5 minutes +/- 2,2, 103,6 minutes +/- 2,6, 28,2 minutes +/- 1,5 and 31,1 +/- 0,8 for *N. furzeri* (annual), *N. guentheri* (annual), *A. striatum* (non-annual) and *A. lineatus* (non-annual), respectively. Slopes of the regression lines between each pair of annual and non-annual species were different at $P < 0.0001$ (Figure 3). As a consequence, *A. striatum* embryos contain 32 cells after 3 hours while at the same time *N. furzeri* has just completed the first cleavage. To test whether this striking difference between annual and non-annual sister clades was observed in all evolutionary lineages, we followed the early cleavage phase of 11 different species of Aplocheiloidei representing the three different evolutionary lineages. From South America, we imaged the annual species *Rachovia brevis* and the related non-annual species *Rivulus cylindraceus*. From Africa, west of Dahomey gap, we imaged the annual species *Callopanchax occidentalis* and the non-annual species *Scriptaphysemon guignardi* and *Epiplatys dageti monroviae*. From Africa, east of Dahomey gap, we imaged the annual species *Nothobranchius furzeri*, *N. guentheri*, *N. korthause* and *N. melanospilus* and the non-annual species *Aphyosemion australe* and *A. striatum* (Figure 4).

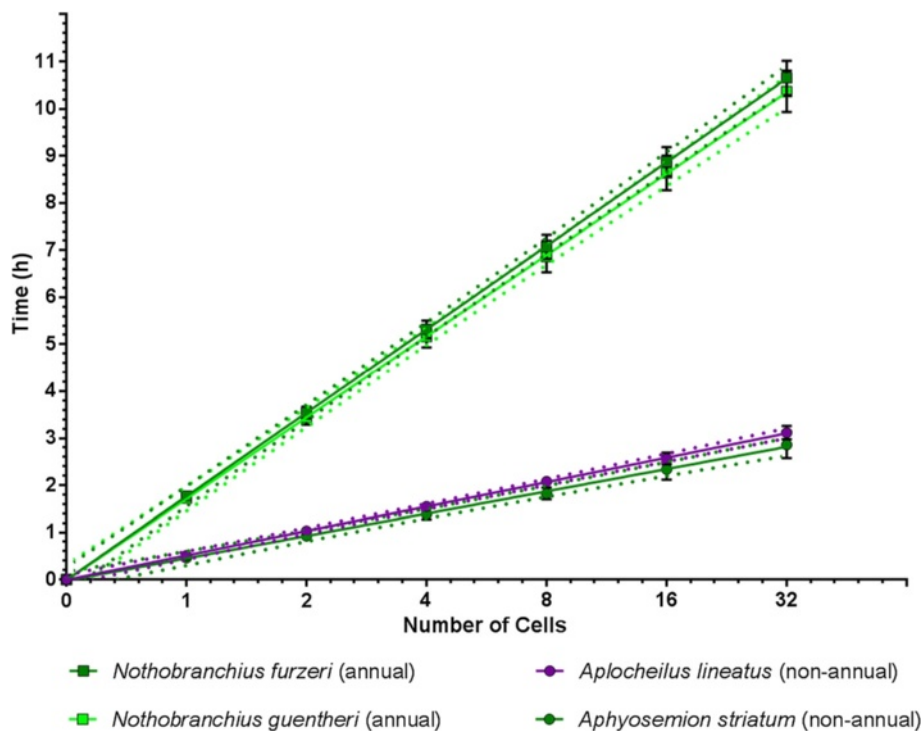
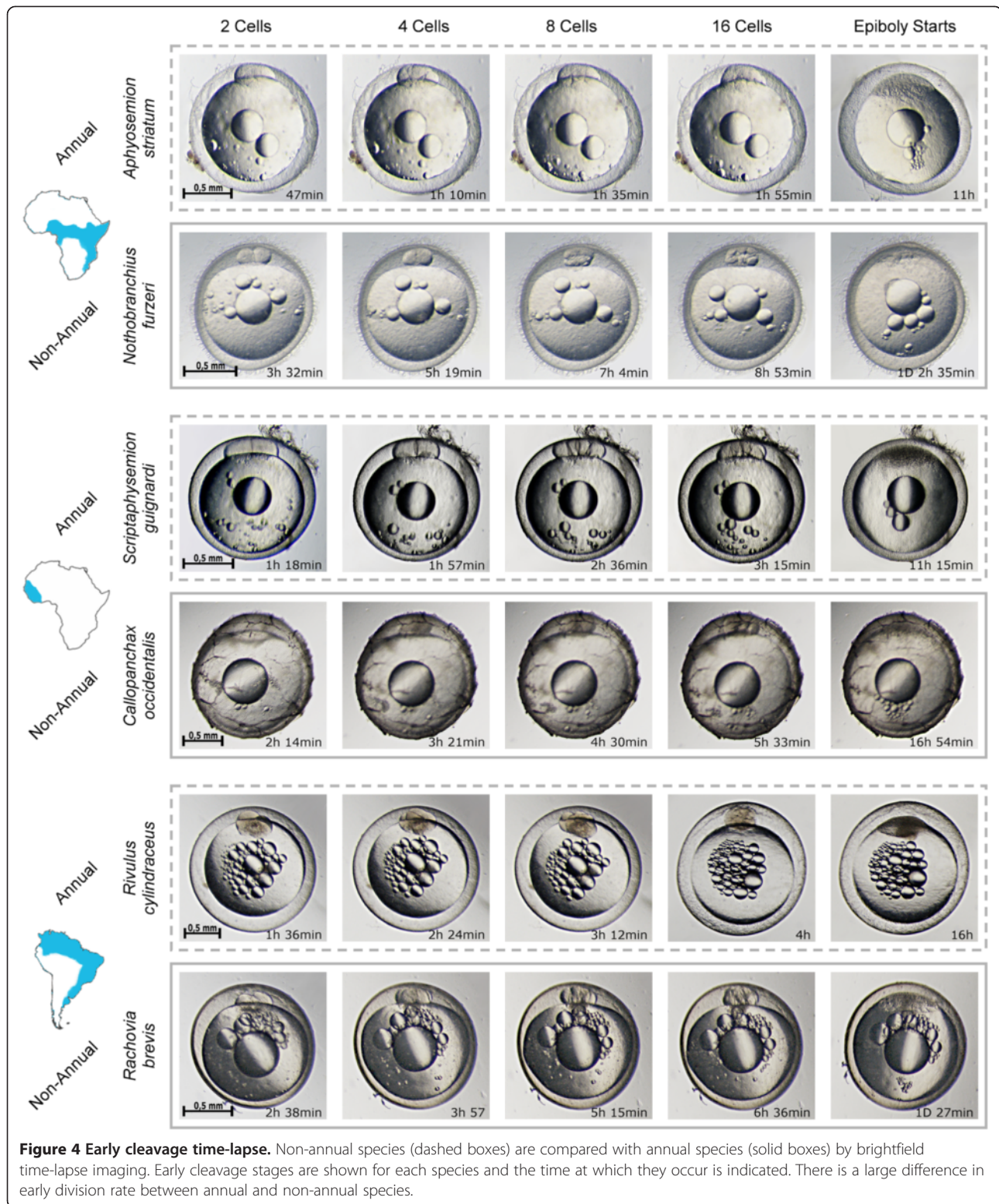


Figure 3 Early division rates greatly differ between annual and non-annual species. Time-lapses videos were plotted, with developmental stages on the x-axis and time of occurrence on y-axis. Data are means of three independent experiments. Error bars represent standard deviations. Dashed lines indicates confidence intervals of the regressions. The slopes of the lines clearly show the great difference between annual and non-annual early division times.



In Figure 5, the time at which each cell division occurs is reported for each annual (solid line) and non-annual (dashed line) species, whereas color codes show the geographic origin of the species. The main result of our study

is that the length of the cell cycle varies dramatically between annual and non-annual species (Figure 5, Student's t-test, $P < 0.001$) and that this difference evolved at least three times during Aplocheiloid history. The six

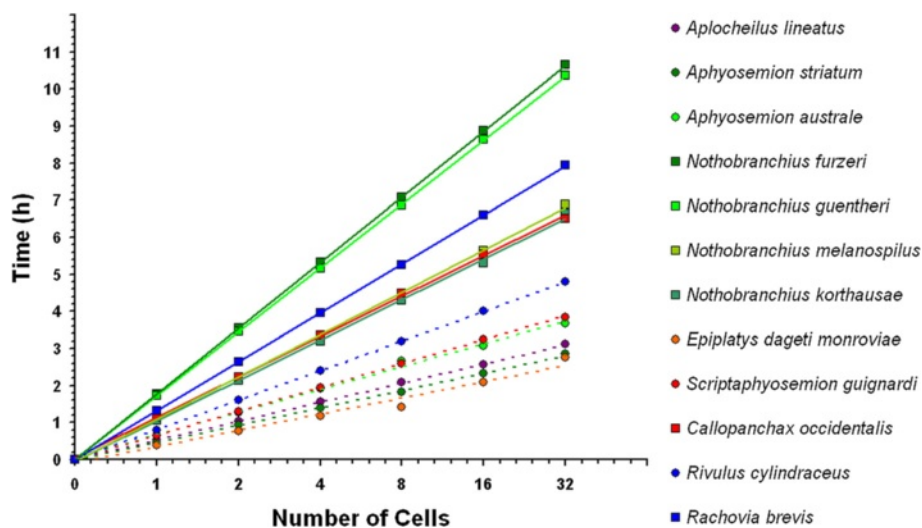


Figure 5 Difference between annual and non-annual division rate is conserved in Aplocheiloidei. All species followed with time-lapses videos were plotted. Developmental stages are shown on the x-axis and time at which they occur on the y-axis. Dashed lines indicate non-annual species, solid lines annual species and color codes the geographic clade. For each species only one individual embryo is plotted.

non-annual species show an average cleavage time of 34.8 minutes (range 23.0 to 48.0). This rate is comparable to the outgroup *A. lineatus*. On the other hand, the seven annual species show an average cleavage time of 75.6 minutes (range 66.0 to 100.0).

There are two possible explanations for these results: a) annual fish have slower S- and M-phases, or b) annual species have inserted a G₁ phase in the cell cycle during early cleavage. To distinguish between these two competing hypotheses, we took advantage of the fluorescent ubiquitination-based cell cycle indicator (FUCCI) system for imaging cell cycle progression. In this system, a red and a green fluorescent reporter are fused to protein motives that drive degradation in the G₁ and the S phase respectively [28]. Therefore, a cell in the G₁ phase would appear red and a cell in the S/G₂ phase green, while cells in the M- phase would show no fluorescence. FUCCI reporter mRNAs optimized for zebrafish [29] were micro-injected in *N. furzeri* fertilized eggs and the fluorescence followed over time (five independent experiments). From these experiments (Figure 6 and Additional file 3), it is clear that the first five divisions are synchronous. The red and green fluorescent reporters rise in phase after cell division (Figure 6A-F), become cytoplasmic (Figure 6G) and are then degraded (Figure 6H) before cell division. Starting from the sixth division (Figure 6K), cells with a prevalence of red fluorescence intermingled with cells with a prevalence of green fluorescence are detectable, demonstrating desynchronization of the cell cycle and the appearance of a G₁ phase.

At the start of epiboly, cells continue dividing in the animal pole while migrating (Figure 7A-B) for almost

2 days (at 26°C). As epiboly proceeds (days 3 to 4), the fraction of cells in the S-phase is progressively reduced and at 70% epiboly only a few scattered cells appear to be in the S-phase (arrows, Figure 7C). Once epiboly is complete, the dispersed phase starts and lasts for 5 days. During the dispersed cell phase, all cells appear to be in G₁ as indicated by the detection of red fluorescence only (Figure 7D).

The results of the FUCCI imaging indicate that the slowness of the cell cycle in annual killifish species is not due to the presence of a G₁ phase, but rather to a retardation of the S- and M-phases. Further, the first signs of asynchrony are observed already between the fifth and sixth divisions. This is considerably earlier than the tenth division, as originally reported for *D rerio* in correspondence to the mid blastula transition [30], and is in line with recent results obtained in *O latipes*, where the desynchronization is observed between the fifth and the sixth division [31]. In medaka and also in zebrafish, however, the first signs of transcription from the zygotic genome are observed around the sixth division [31,32] and are defined as pre-MBT transcription. It is possible that in annual fish as well, the activation of the very first zygotic genes corresponds to the first signs of asynchrony.

A striking difference in cell-cycle length between annual and non-annual species was observed in three independent clades of killifish. This datum strongly suggests that transition of life history was the driving force for this phenotypic switch. It is however unclear whether a slow cell cycle provides any evolutionary advantage. Prolongation of cell-cycle in annual killifish could result

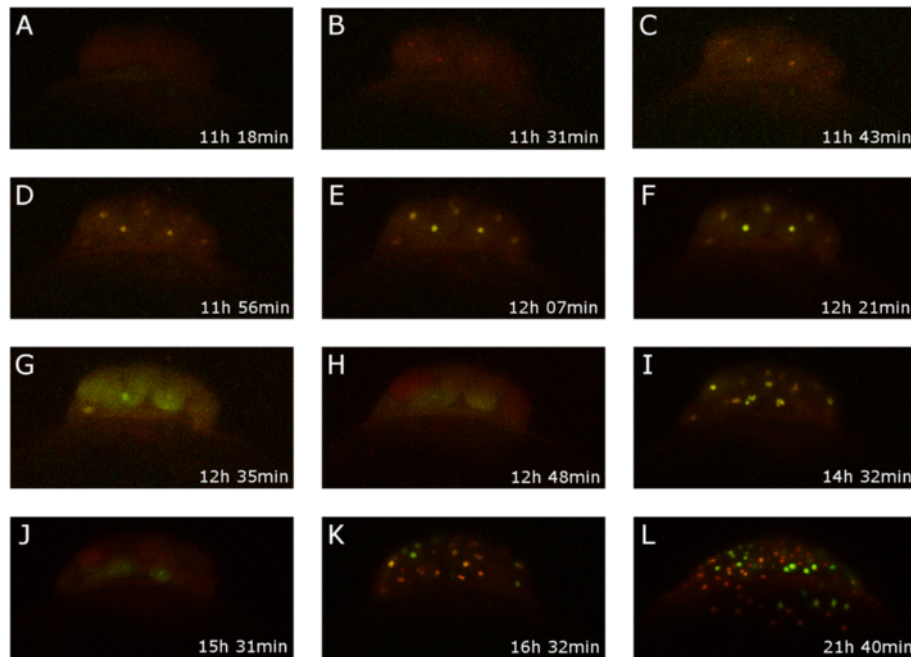


Figure 6 Cell cycle during early cleavage. Cell cycle progression in *Nothobranchius furzeri* was visualized by fluorescent ubiquitination-based cell cycle indicator (FUCCI). From (A) to (H) the last synchronous division (fourth) is shown, all nuclei are yellow and cells perfectly synchronized in cycling. (I) Represents the first division where asynchrony starts. (J) last synchronous dark stage. (K-L) later stages when cells are clearly asynchronous and cells in different phases can be recognized at the same time point.

either from the loss of an evolutionary constraint or from the appearance of a novel evolutionary constraint. In the first scenario, the slow cell-cycle evolved in response to the weakening of a directional selection for rapid development that applies to non-annual killifish, because annual killifish eggs spend months (or even years) before hatching. It is indeed of interest if annualism is the basal trait of all three clades and the non-annual clades lost this basal trait independently. Therefore, in all three instances, transition to a non-annual lifestyle induced a convergent evolution of fast cell-cycle likely because of re-establishment of a directional selection for developmental speed.

In the second scenario, cell cycle is extended as a result of a specific adaptation in order to prolong a period when the embryo can respond with phenotypic plasticity

to environmental conditions. In fact, annual killifish embryos can skip diapause when environmental conditions are favorable [33]. Diapause skipping can be an advantage if the water body fills more than once during a season [34] allowing a second generation and the commitment to this alternative developmental pathway is determined during the early development [33]. So, slowing the cleavage phase would prolong the amount of time available to embryos for responding to environmental conditions.

Conclusions

Our results show, for the first time, that cell-cycle rate during cleavage, a trait thought to be rather evolutionary conserved can undergo convergent evolutionary change in response to variations in life history.

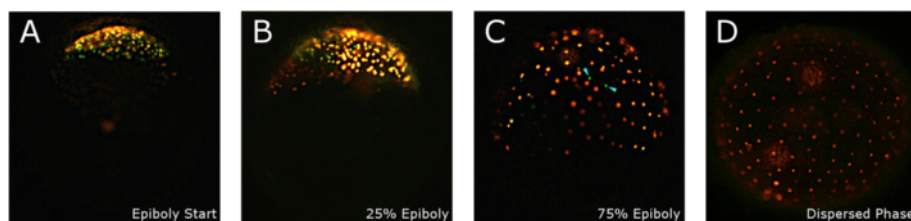


Figure 7 Cell cycle during epiboly and dispersed phase. Cell cycle progression in *Nothobranchius furzeri* was visualized by fluorescent ubiquitination-based cell cycle indicator (FUCCI). Green cells in the S-/G₂ phase, red cells are G₁-phase cells. Cells divide for the first days of development at the animal pole (A-B) and then just migrate in G₁ onto the embryo surface during late epiboly and the dispersed cell phase (C-D).

Ethics

The experiments did not cause any distress to the animals. The protocols of fish maintenance were authorized by the Italian Ministry of Health (Authorization number 96/2003-A).

Additional files

Additional file 1: *Nothobranchius furzeri* time lapse. A

Nothobranchius furzeri embryo has been followed through bright-field time lapse imaging from the one-cell stage to the dispersed phase. Cells divide at the animal pole (top part, above the yolk) and then migrate over the yolk surface (sec 21) during epiboly. Macroblastomers (big cells) can be spotted moving randomly and following the epiboly migration layer. When epiboly is complete (sec 54) macroblastomers continue moving randomly during the dispersed phase, that will last for several days.

Additional file 2: Annual and non-annual time lapse: comparison between the division rate of annual (*Nothobranchius furzeri*) and non-annual (*Aphyosemion striatum*). Cells divide at the animal pole (top part, above the yolk) and the time at which they cleave is greatly different between the annual and the non-annual species.

Additional file 3: Fluorescent ubiquitination-based cell cycle indicator (FUCCI) time lapse. Cell cycle progression is visualized by FUCCI. Green cells are dividing cells in the S-/G₂ phase, red cells are G₁-phase cells; most of the fluorescent protein accumulates in the nuclei. Cells divide synchronously (appear and disappear together) until 32 cells are reached, after which asynchrony starts and cells start to cycle and divide at different times (different colors of cells at the same time, and different timing of appearing/disappearing).

Abbreviations

FUCCI: Fluorescent ubiquitination-based cell cycle indicator; RT: Room temperature.

Competing interests

The authors declare that they have no competing interests.

Authors' contributions

LD performed the imaging and microinjection, analyzed the data, prepared the figures/movies and wrote the manuscript. RR produced the plasmids and RNA for the study, AC designed the study, analyzed the data and wrote the manuscript. All authors read and approved the final manuscript.

Acknowledgements

We wish to thank Roberto Barbuti for hospitality in the Museo di Storia Naturale e del Territorio di Calci and A Miyawaki for providing the FUCCI plasmids. This work was partially supported by internal grant of SNS.

Received: 16 June 2014 Accepted: 30 July 2014

Published: 22 September 2014

References

1. Myers GS: Annual fishes. *Aquarium J.* 1952, **23**:125–141.
2. Wourms JP: The developmental biology of annual fishes. 3. Pre-embryonic and embryonic diapause of variable duration in the eggs of annual fishes. *J Exp Zool* 1972, **182**:389–414.
3. Genade T, Benedetti M, Terzibasi E, Roncaglia P, Valenzano DR, Cattaneo A, Cellerino A: Annual fishes of the genus *Nothobranchius* as a model system for aging research. *Aging Cell* 2005, **4**:223–233.
4. Podrabsky JE, Hand SC: The bioenergetics of embryonic diapause in an annual killifish, *austrorfundulus limnaeus*. *J Exp Biol* 1999, **202**(Pt 19):2567–2580.
5. Podrabsky JE, Carpenter JF, Hand SC: Survival of water stress in annual fish embryos: dehydration avoidance and egg envelope amyloid fibers. *Am J Physiol Regul Integr Comp Physiol* 2001, **280**:123–131.
6. Blazek R, Polacik MJ, Reichard M: Rapid growth, early maturation and short generation time in African annual fishes. *EvoDevo* 2013, **4**:24.
7. Di Cicco E, Tozzini ET, Rossi G, Cellerino A: The short-lived annual fish *Nothobranchius furzeri* shows a typical teleost aging process reinforced by high incidence of age-dependent neoplasias. *Exp Gerontol* 2011, **46**:249–256.
8. Genade T, Lang DM: Resveratrol extends lifespan and preserves glia but not neurons of the *Nothobranchius guentheri* optic tectum. *Exp Gerontol* 2013, **48**:202–212.
9. Hartmann N, Reichwald K, Lechel A, Graf M, Kirschner J, Dorn A, Terzibasi E, Wellner J, Platzer M, Rudolph KL, Cellerino A, Englert C: Telomeres shorten while Tert expression increases during ageing of the short-lived fish *Nothobranchius furzeri*. *Mech Ageing Dev* 2009, **130**:290–296.
10. Herrera M, Jagadeeswaran P: Annual fish as a genetic model for aging. *J Gerontol A Biol Sci Med* 2004, **59**:101–107.
11. Hsu CY, Chiu YC: Ambient temperature influences aging in an annual fish (*Nothobranchius rachovii*). *Aging Cell* 2009, **8**:726–737.
12. Kirschner J, Weber D, Neuschl C, Franke A, Bottger M, Zielke L, Powalsky E, Groth M, Shagin D, Petzold A, Hartmann N, Englert C, Brockmann GA, Platzer M, Cellerino A, Reichwald K: Mapping of quantitative trait loci controlling lifespan in the short-lived fish *Nothobranchius furzeri* - a new vertebrate model for age research. *Aging Cell* 2012, **11**:252–261.
13. Lucas-Sanchez A, Almada-Pagan PF, Madrid JA, de Costa J, Mendiola P: Age-related changes in fatty acid profile and locomotor activity rhythms in *Nothobranchius korthausae*. *Exp Gerontol* 2011, **46**:970–978.
14. Terzibasi E, Lefrancois C, Domenici P, Hartmann N, Graf M, Cellerino A: Effects of dietary restriction on mortality and age-related phenotypes in the short-lived fish *Nothobranchius furzeri*. *Aging Cell* 2009, **8**:88–99.
15. Terzibasi Tozzini ET, Dorn A, Ng'oma E, Polacik M, Blazek R, Reichwald K, Petzold A, Watters B, Reichard M, Cellerino A: Parallel evolution of senescence in annual fishes in response to extrinsic mortality. *BMC Evol Biol* 2013, **13**:77.
16. Polacik M, Blazek R, Rezuca R, Vrtilek M, Terzibasi Tozzini E, Reichard M: Alternative intrapopulation life-history strategies and their trade-offs in an African annual fish. *J Evol Biol* 2014, **27**:854–865.
17. Podrabsky JE, Culpepper KM: Cell cycle regulation during development and dormancy in embryos of the annual killifish *Austrofundulus limnaeus*. *Cell Cycle* 2012, **11**:1697–1704.
18. Lesseps RJ, van Kessel AH, Denuce JM: Cell patterns and cell movements during early development of an annual fish, *Nothobranchius neumanni*. *J Exp Zool* 1975, **193**:137–146.
19. Murphy WJ, Collier GE: A molecular phylogeny for aplocheiloid fishes (Atherinomorpha, Cyprinodontiformes): the role of vicariance and the origins of annualism. *Mol Biol Evol* 1997, **14**:790–799.
20. Hrbek T, Larson A: The evolution of diapause in the killifish family Rivulidae (Atherinomorpha, Cyprinodontiformes): A molecular phylogenetic and biogeographic perspective. *Evolution* 1999, **53**:1200–1216.
21. Oppenheimer JM: The normal stages of *Fundulus heteroclitus*. *Anat. Rec.* 1937, **68**:1–15.
22. Kimmel CB, Ballard WW, Kimmel SR, Ullmann B, Schilling TF: Stages of embryonic development of the Zebrafish. *Developmental Dynamics* 1995, **203**:253–310.
23. Iwamatsu T: Stages of normal development in the medaka *Oryzias latipes*. *Mech Dev* 2004, **121**:605–618.
24. Swarup H: Stages in the Development of the Stickleback *Gasterosteus aculeatus* (L.). *J Embryol Exp Morphol* 1958, **6**:373–383.
25. Newport J, Kirschner M: A major developmental transition in early *Xenopus* embryos. *Cell* 1982, **30**:675–686.
26. Gilbert SF: *Developmental Biology*. Sunderland (MA): Sinauer Associates; 2000.
27. Graham CF, Morgna RW: Changes in the cell cycle during early amphibian development. *Developmental Biology* 1966, **14**:439–460.
28. Sakaue-Sawano A, Kurokawa H, Morimura T, Hanyu A, Hama H, Osawa H, Kashiwagi S, Fukami K, Miyata T, Miyoshi H, Imamura T, Ogawa M, Masai H, Miyawaki A: Visualizing spatiotemporal dynamics of multicellular cell-cycle progression. *Cell* 2008, **132**:487–498.
29. Sugiyama M, Sakaue-Sawano A, Imura T, Fukami K, Kitaguchi T, Kawakami K, Okamoto H, Higashijima S, Miyawaki A: Illuminating cell-cycle progression in the developing zebrafish embryo. *Proc Natl Acad Sci USA* 2009, **106**:20812–20817.
30. Kane DA, Kimmel CB: The zebrafish midblastula transition. *Development* 1993, **119**:447–456.

31. Kraussling M, Wagner TU, Schartl M: **Highly asynchronous and asymmetric cleavage divisions accompany early transcriptional activity in pre-blastula medaka embryos.** *PLoS One* 2011, **6**:e21741.
32. Mathavan S, Lee SG, Mak A, Miller LD, Murthy KR, Govindarajan KR, Tong Y, Wu YL, Lam SH, Yang H, Ruan Y, Korzh V, Gong Z, Liu ET, Lufkin T: **Transcriptome analysis of zebrafish embryogenesis using microarrays.** *PLoS Genet* 2005, **1**:260–276.
33. Podrabsky JE, Garrett ID, Kohl ZF: **Alternative developmental pathways associated with diapause regulated by temperature and maternal influences in embryos of the annual killifish *Austrofundulus limnaeus*.** *J Exp Biol* 2010, **213**:3280–3288.
34. Polačik M, Blažek R, Režucha R, Vrtílek M, Terzibasí Tozzini E, Reichard MJ: **Alternative intrapopulation life-history strategies and their trade-offs in an African annual fish.** *Evol Biol.* 2014, **27**:854–865.

doi:10.1186/2041-9139-5-32

Cite this article as: Dolfi *et al.*: Transition to annual life history coincides with reduction in cell cycle speed during early cleavage in three independent clades of annual killifish. *EvoDevo* 2014 5:32.

Submit your next manuscript to BioMed Central and take full advantage of:

- Convenient online submission
- Thorough peer review
- No space constraints or color figure charges
- Immediate publication on acceptance
- Inclusion in PubMed, CAS, Scopus and Google Scholar
- Research which is freely available for redistribution

Submit your manuscript at
www.biomedcentral.com/submit

